

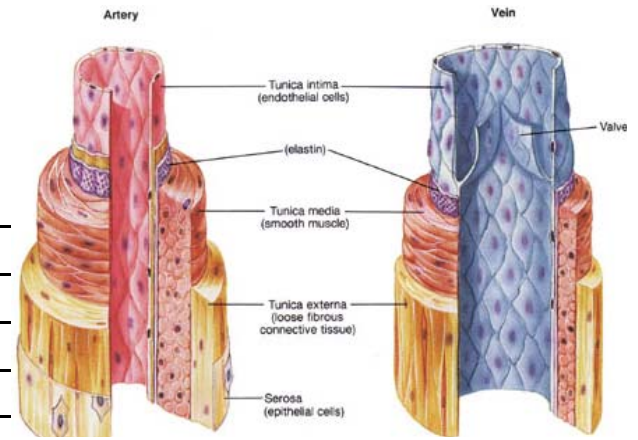
ARTERIES & VEINS FOR WHICH A&P STUDENTS ARE RESPONSIBLE

Revised 14Mar2016

Page references in Martini, Fundamentals of Anatomy & Physiology, 6th : 721-777, 7th: 710-753, 8th: 719-774, 9th: 708-759, 10th: 724-779

Contrasting histology of arteries (elastic) and veins (may have valves) (p 725, 727):

TISSUE LAYERS	ARTERY	VEIN
tunica intima	endothelium, <i>internal elastic lamina</i>	endothelium
tunica media	thick smooth muscle, <i>external elastic lamina</i>	thin smooth
tunica externa	adventitia with vasovasorum	vasovasorum

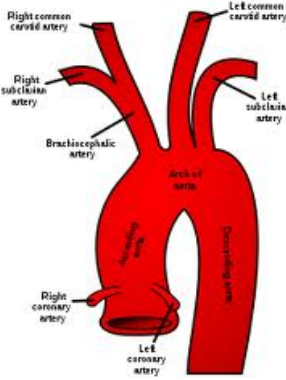


HEART, P. 696, 754

- pulmonary trunk (splits to form)
- R & L pulmonary arteries
- Ascending Aorta
 - R & L coronary arteries
- circumflex artery
- anterior & posterior interventricular arteries

THORAX, p. 754, 757

- Aortic Arch
 - brachiocephalic
 - R common carotid
 - internal carotid (to brain)
 - external carotid (to face and scalp)
 - R subclavian
 - R axillary
 - R brachial
 - L common carotid
 - L subclavian
 - L axillary
 - L brachial
 - Descending aorta
 - R internal thoracic
 - intercostal arteries



ABDOMEN, p. 760, 762

- celiac artery
 - L gastric artery (L most)
 - splenic artery (middle)
 - Common hepatic artery (R most)
 - R & L hepatic
 - R gastric artery (joins L gastric)
 - superior mesenteric artery
 - R&L renal arteries
 - R&L gonadal arteries
 - inferior mesenteric artery
- R & L common iliac
 - internal iliac
 - external iliac

UPPER APPENDAGE, p. 757

- R & L subclavian
- axillary
- brachial (branches at elbow)
 - radial
 - ulnar
- superficial palmar arch
- deep palmar arch
- digitals

LOWER APPENDAGE, p.764

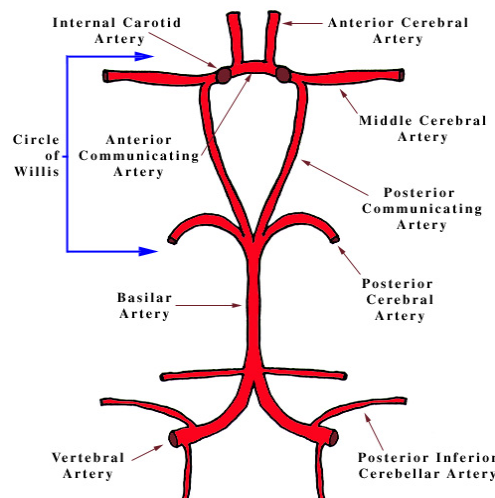
- femoral
 - deep femoral
 - popliteal
 - Ant. tibial
 - post. tibial
 - peroneal
- dorsal pedis
- lateral plantar
- medial plantar
- plantar arch

NECK, p. 758

- common carotid
- carotid sinus
- external carotid
 - facial
 - occipital
 - maxillary
 - superficial temporal
- internal carotid
- vertebral

BRAIN, p.759

- R & L vertebral arteries
- basilar
- R & L internal carotids
- Circle of Willis:**
 - posterior cerebral
 - posterior communicating
 - middle cerebral
 - anterior communicating
 - anterior cerebral



VEINS NOT NAMED

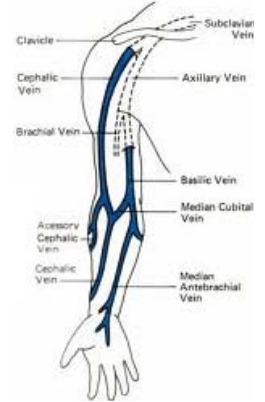
PARALLEL WITH ARTERIES:

Brain and Head:, p. 766

- superior sagittal sinus
- inferior sagittal sinus
- straight sinus
- transverse sinus
- confluence of the sinuses
- internal jugulars
- external jugulars (to subclavians)
- vertebrals

Chest: p. 768

- R & L subclavian
- R & L brachiocephalic
- axillary
- brachial
- azygos
- accessory
- azygos
- hemiazygos



Arm: p. 768

- cephalic (most lateral)
- brachial (deep)
- basilic (most medial)
- median cubital** (connects basilic & cephalic)

Abdomen: p. 771

- hepatic portal
- R & L hepatic
- R gonadal
- L gonadal (note carefully)
- hepatic portal

Leg: p. 770

- great saphenous (medial thigh)
- small saphenous (lateral leg)